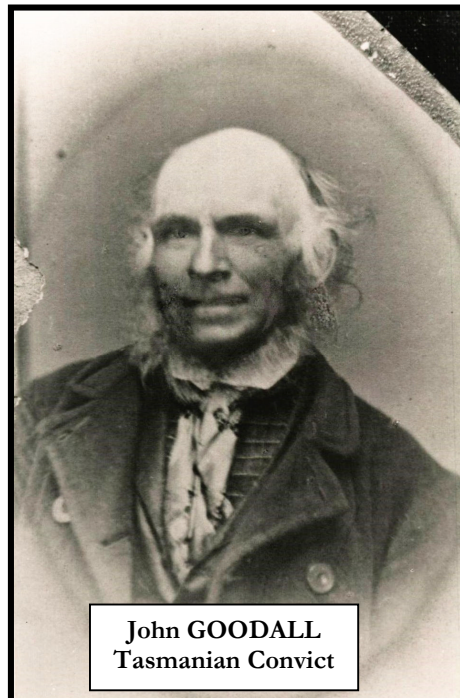




**Journal of
Coffs Harbour District Family History Society Inc.**



* Society Information	Inside Front Cover	* Membership Details, etc. * Australian Women's Mirror 1938 * FamilySearch	6
* President's Report * AGM * Tripping Over a Convict	1 1-2	* Workshops and Seminars * Coffs Harbour Regional Seminar * Wish You Could Still Buy These?	7
* Convict Love Tokens * Biographical Database of Australia	3	* Items of Interest from Exchange Journals	8-9
* Woolmers Estate * St. Matthews Windsor * Workhouse Project	4	* Useful Websites * Can You Help? * Members Interests	9-10 10 10-11
* Moonrakers Wiltshire Genealogy * Stray Certificates & Transcriptions * Monitors * Genealogy Events	5	* New Resources * Member Entitlements * Items for Sale	11 Back Cover



Journal Published Quarterly by

COFFS HARBOUR DISTRICT
FAMILY HISTORY SOCIETY INC.

Mail: PO Box 2057, Coffs Harbour, 2450
Location: Rear of 169 Rose Avenue, Coffs Harbour, NSW
ABN NO: 22 081 981 363
Phone: (02) 6651 6126
Email: coffsgenie@gmail.com
Website: www.rootsweb.ancestry.com/~nswchfhs



Hon. Solicitor: Vanessa Leskys - PO Box 47, Grafton, 2460

OFFICE BEARERS:

President: Stan GORDON
Phone: (02) 6658 7955
Email: stngordon@gmail.com

Vice President: Rosie DOHERTY
Phone: (02) 6652 4469
Email: rdoherty1@bigpond.com

Treasurer/Public Officer: Jane GOW
Phone: (02) 6658 3355
Email: jg77734@gmail.com

Secretary: Marlene GORDON
Phone: (02) 6653 2345
Email: georgegordon6@bigpond.com

COMMITTEE MEMBERS:

Special Projects Co-ordinator: Rosie DOHERTY

Special Projects Assistant: Diane SMITH

Workshop Co-ordinator: Sharon INGERSOLE

Assistant Secretary: Diane Smith

Membership Secretary: Marlene GORDON

Membership Secretary Assistant: Diane Smith

Publicity Officer: Maggie HEFFERNAN

Resources Officer: Gloria SMALL

FamilySearch Administrator: Helen HULL

Journal Editor: Narelle HOY

Exchange Journals Officer: Leonie BAKER

Monitors' Co-ordinator: Christine BERRIDGE

Research Co-ordinator: Barbara SMITH

Research Assistant: Nerida LEE

Equipment Officer: Stan GORDON

Catering Co-ordinator: Stan GORDON

RESEARCH:

Library Hours:

Tuesday - Thursday: 10am – 4pm
Saturday: 10am – 4pm (except 4th Saturday of the month)

Library Fees:

Members: Free on production of current membership card.
Visitors: \$14.00 per day or \$7.00 per half day or part thereof.

Duty Monitors are available for advice and assistance.

Workshops: Fourth Saturday of each month or as otherwise advertised.

MEMBERSHIP FEES:

Annual Membership:

Single :

Annual Fee:\$40.00

Joint : (Two persons same address)

Annual Fee:\$60.00

Correspondence Inquiries

Research will be undertaken for an initial fee of \$30.00.
More information on Contacts page on our website.

Library Rules

- Current membership cards to be worn in rooms.
- Attendance book to be signed on arrival and departure.
- Bags to be left in area indicated by monitor.
- Pencils only to be used in library.
- Photocopies available through Duty Monitor and to be charged according to price schedule.
- One microfiche only to be removed from drawer. Do not remove plastic sleeve from microfiche.

Contact Persons:

President – Stan Gordon..... (02) 6658 3355
Secretary - Marlene Gordon (02) 6653 2345
Treasurer - Jane Gow (02) 6658 3355

ALL ENQUIRIES WELCOME

RECIPROCAL RIGHTS: Reciprocal rights are offered to members of all family history societies who visit our room to do research (proof of current membership is required).

The Society does not hold itself responsible for statements made or opinions expressed by authors of the articles published in Genie-Allergy. All care is taken to be accurate, however the Editor reserves the right to publish abridged articles/special features due to space constraints.

PRESIDENT'S REPORT

It's hard to believe that the month of September is looming. Is it age or the busy lives we lead that causes time to move so quickly? It seems like it was only yesterday that I wrote the last President's report. It makes one realise how fast life is slipping us by when deadlines have to be met.

A few things that have been discussed at Committee level need to be brought to the notice of Society members:

- The Committee has been considering conducting workshops bi-monthly. Please think about this proposal carefully and let us know your opinion - keeping in mind the best interests of our guest speakers and our members.
- Do not use your private subscriptions to websites for research at the rooms as this can inconvenience other researchers using our subscription sites such as Ancestry, Find My Past, etc. as our log ins and passwords are stored on the computers.
- Under no circumstances should you purchase certificates or anything else using credit cards or Pay Pal on Society computers. These can be compromised.

Our **Annual General Meeting** will be held in September with all positions being declared vacant. Please do not think anyone has a monopoly on any position. We also would like to hear from members who would be interested in joining a sub-committee to help the co-ordinators in the fields of research, workshops, catering, maintenance and special projects. We would like these to commence after the Annual General Meeting.

Christmas Party: The Executive Committee has made a decision to hold our Christmas Party this year at the Sawtell Golf Club. It will be on Saturday 10th December at 12 noon (for 12.30pm) and we will have a two course Christmas Lunch. Husbands, wives and partners are welcome and the cost is \$30.00 per person. Payment will need to be made at our Research Room by 1st December and if you have any special dietary requirements please let us know.

Happy Researching.

Stan Gordon, President #1610



The tree of life for some has cast its shade. We must make sure their memories never fade.

ANNUAL GENERAL MEETING SATURDAY 24th SEPTEMBER 2016

The Notice for the AGM and Statement of Receipts & Payments for the last financial year is included in this Journal. Only financial members are eligible to vote at the AGM.

Any financial member may be nominated for election to the Committee by any other two financial members. Nomination forms are available from our Research Room or a copy can be emailed (contact the Secretary). Closing date for nominations is 4pm on 17th September. Completed forms should be placed in the drawer marked "Secretary" above the Admin Desk.

TRIPPING OVER A CONVICT

I had always been a bit jealous of my partner, Tom and his two 'First Fleeters', but consoled myself with the thought that my lot were honest and true, through and through. I indulged him as we took a trip to Norfolk Island last year to track down 'his' ANN **FORBES** who arrived there in 1790 aboard the '*Sirius*'. (That is another story). The history of the island and its early inhabitants captivated us and we decided to follow up with a caravan trip to Tasmania this year.

The highlight of our Tasmanian trip was the inspiring guide at the Cascades Female Factory in Hobart. Our guide enlightened us to the true conditions of those poor women so long ago who were often treated even more harshly than the men. They regularly suffered rulings such as not being able to speak within the walls,

the high probability of any children they might bear not surviving - along with the horror of isolation cells and bread and water rations.

From Hobart, we followed the convict trail up to Longford - on the way stopping at Campbelltown for a coffee break at the local providores. Campbelltown is a quaint village boasting *The Red Bridge* built in 1838, using penal labour and 1,250,000 convict bricks. It is still carrying the full gamut of traffic today. The second-hand book store beckoned from across the way and it was only when we approached it that we noticed a series of pavers leading a trail from the bridge up towards the main street/highway. Each paver stood for one convict and detailed their name, age at date of transportation, ship of arrival, crime and any other interesting information that could be fitted on a paver - including a code. Well of course we went in search of ANN **FORBES**. Given the number of pavers, the local butcher suggested we consult the index held at the antique store several doors up. As Tom headed in that direction, I amused myself looking at the pavers as I trailed behind.

I was immediately halted when I saw JAN JUC on a paver. The words had jumped out at me. This is, and was, a small locality on the Great Ocean Road and my forebears had immigrated from THE ISLE OF WIGHT to JAN JUC. My eyes focused as I read, 'Started a school'. Well how interesting - my forbear was a teacher! With slightly quickened heartbeat, I raised my eyes to the top line and the name JOHN **GOODALL**. *My Forebear!* The information stated he was transported in 1830 on board the 'Royal George' at the age of 25. I raced back to the caravan, set up the computer and sure enough, my JOHN **GOODALL** was born in 1805. *I had my very own convict!*

But what a sly dog! All references in the family history previously noted he emigrated from the Isle of Wight! Emigrated - with Government Assistance no less! Tom was equally pleased for me and it was wonderful to be able to share my excitement with him. Not so my 91 year old father. I immediately phoned him to tell him of the development in our family line. Needless to say it was a very short conversation and he was not impressed in the least. Of course he remarked, "It was on the maternal side!" No **REID** could be so blemished. His lack of enthusiasm could not stifle mine: *I had a convict!*

Coincidentally there was a change of plans for our travel back to Coffs. We were now going via The Great Ocean Road to Apollo Bay via JAN JUC. Sadly, we passed through Torquay, which encompasses the JAN JUC area, when the Family History Rooms were closed. However, I phoned the contact and cannot believe what a helpful response I received. Before we arrived at Apollo Bay I had received an email with 14 attachments related to JOHN **GOODALL** including a photo. What an incredible service! It was further evidence of the helpfulness and value of Family History Societies. I am now in the process of rewriting that part of my family history to include the colourful past of JOHN **GOODALL**. It turns out that while in Van Dieman's Land, John's application to marry another convict, ANNE **ROWLAND**, from the female factory at Launceston, was denied. However, they did have a child, ELLEN, who of course does not feature in our history at all.

On moving to Victoria and the JAN JUC area in the 1840s, JOHN **GOODALL** went on to marry ANNE **MAHAN**, they had a daughter JANE ANNE. Jane Anne left the **GOODALL** household in disgrace when she gave birth to my Great Grandmother MAY out of wedlock. May was then raised by her grandfather JOHN **GOODALL** and grandmother Anne. Interestingly May does not appear in any of the JAN JUC family history either. I have yet to contact them and enlighten them to the unknown convict and a whole other side to the family descended from my Great Grandmother, May.

If we had never made the effort to go to Tasmania, I would certainly not have tripped over my convict. So, just when you think you have it all sewn up, another door opens.

Jenny Reid Member #1746

Thanks Jenny for your very inspiring and entertaining story! If there are any other members with stories to tell about their adventures /successes/ experiences in the discovery of their family tree please let your editor, Narelle Hoy know and she would be delighted to include it in a future edition of Genie Allergy.

CONVICT LOVE TOKENS

The National Museum of Australia has 314 convict love tokens in its collection ranging in date from 1762 to 1856. These tokens were made by convicts around the time of their sentencing and were given to friends and loved ones as mementos. The Museum purchased most of the tokens from British dealer and collector, Timothy **MILLETT**.

MILLETT started his collection in 1984. His interest in convict love tokens began after he joined his family's firm **A.H. BALDWIN & SONS**, dealers in coins, commemorative medals, tokens and numismatic (coin collecting) books. In 1984 one of **BALDWIN**'s valued customers offered to sell **MILLETT** the 70 tokens that formed the 'transportation' section of his numismatic collection. **MILLETT** was fascinated by these poignant keepsakes and the tokens became the basis of his own collection. In addition to seeking out and acquiring the tokens, he tried to find out more information about the people named on the tokens, a task made only more difficult by the efforts of many families to cover up any evidence of a convict relation. He continued to build the collection until the Museum acquired the tokens in 2008, to add to its small pre-existing collection of love tokens.

The National Museum now holds the largest collection of convict love tokens in the world. Other institutions in Australia and overseas have collected tokens and a number also remain in private hands. Thanks to the efforts of Timothy **MILLETT** and other researchers, the identity of convicts associated with approximately 80 of the tokens in the collection is known. The Museum has a continuing program of research into the collection, which aims to identify further associations and links to particular individuals. You can view images and information on the tokens at <http://love-tokens.nma.gov.au/>

What is a convict love token?

Smoothing and engraving a coin with a message of affection was one of the few ways a convict could leave a memento behind with loved ones in England before being transported. These small tokens are also known as 'leaden hearts'. They record personal and emotional responses from convicts whose lives are more often represented by official government records.

The tokens often include the names of the convict and their loved one, the length of the convict's sentence and popular phrases and rhymes of separation. They were frequently engraved around the time of conviction for a prisoner's loved one or family. The tokens were engraved or stippled, which involves making marks with a series of small pin pricks. They were crafted by professionals and amateurs.



BIOGRAPHICAL DATABASE OF AUSTRALIA (BDA)

We have a subscription to this database on No. 2 Computer. BDA Update No. 4 is scheduled to go online with the following datasets in spring 2016:

- **39th Regiment pay lists 1826-1833** (NSW, including Moreton Bay).
- **Royal Veteran Company pay lists NSW 1810-1814.**
- **Certificates of Freedom NSW 1823-1869.**
- **Tickets of Leave NSW 1849-1875.**
- **Assisted Immigrants to NSW, Port Phillip & Moreton Bay 1839-1896** giving details of 191,934 immigrants to Sydney and Newcastle (1844- 1896), Moreton Bay Qld (1844-1896) & Port Phillip (Vic) 1839-1851. The arrivals included 978 children aged under six. An additional 2,132 passengers died on the voyages (580 infants and the oldest aged 76).
- **General Post Office - Unclaimed Letters NSW 1836-1852.**
- **Camperdown C of E Cemetery (Sydney NSW) Interment Register 1849-1853.**
- **Railway Passes NSW 1880-1892** index with some data extracted.

WOOLMERS ESTATE

Woolmers Estate is among eleven places included in the Australian Convict Sites World Heritage Property. See their website at www.woolmers.com.au

Woolmers is currently making plans for a very special year of events to celebrate their 200th year in 2017 and as part of this are seeking any interested descendants who may wish to participate. Dates and details of this very special occasion are yet to be finalised.

For further information and inclusion on their mailing list to ensure all are kept up to date with plans, interested parties are welcome to contact Sue-Ellen Groer Collections, Bicentennial Committee Member at Woolmers Estate by phone 03 6391 2230, by email to sue-ellen@woolmers.com.au or by mail to PO Box 15, Longford TAS 7301.

ST. MATTHEWS ANGLICAN CHURCH, WINDSOR

In October 2017, St. Matthews Anglican Church, Windsor, will be celebrating the bicentenary of the laying of the foundation stone by Governor Lachlan Macquarie on 11th October 1817.

St Matthews and its associated graveyard are historically significant to the state of NSW and to the Hawkesbury area. The church has been the centre of spiritual life in the district since it was consecrated by the Reverend Samuel Marsden in 1822, with many families marking marriages, baptisms and deaths over several generations. The cemetery at St Matthews has been in use since former convict, later appointed Chief Constable and magistrate, ANDREW THOMPSON, was buried there in 1810. There are a number of First Fleeter grave sites and twelve of those are marked with plaques from the Fellowship of First Fleeters.

During the lead up to the bicentenary, family societies and descendants of those who have current or former connections with the church are invited to celebrate their association with St Matthews by holding reunions, commemorative services or family get-togethers at the Church. Interested individuals, family groups or associations are invited to join the mailing list to be kept informed of events leading up to the bicentenary.

A commemorative service will be held on Sunday 8th October 2017 and services, concerts and open days will be arranged. If you would like to be kept informed, please email

stmatthewsbicentenary@windsoranglican.asn.au

WORKHOUSE PROJECT

A project group is to be formed in the coming weeks to source and trace the Orphan Girls that left MOUNTBELLEW Workhouse and immigrated to Australia in 1853 on an Irish Bride ship called the '*Palestine*', arriving in Western Australia on April 28, 1853.

These are the names of the girls that set sail on this ship:

Pat O'BRIEN; Biddy O'BRIEN; Mick O'BRIEN; Catho O'BRIEN; Mary O'BRIEN; Catho CUNNINGHAM; Mary GERAGHTY; Mary FLANAGAN; Mary FLYNN; Ms STAUNTON; Mary TAYLOR; Ms. EGAN; Biddy FITZGERALD; Ellen HANSBERRY; Mary KILROY; Biddy TULLY; Mary CUNNINGHAM; Biddy BODKIN; Mary BUTLER; Mary NEARY; Mary FLYNN; Biddy CONCANNON; Henry NOONE; Ms. NILFAGLE; Cathie HUGHES; Georgia NE, Marie LORRE, Maria EGAN, Celia COLDMAN, Catho GLYNN, Mary CATHE, Mary MANNION, Mary DOOLEY, Esther TULLY; Ms. CARBERRY; Mary CARBERRY; Eliza TRASTA; Catho COLEMAN, and Ms. ATKINS.

Anyone interested in Assisting with the project please contact Paula Kennedy: pkpaulakennedy@gmail.com or check out the Mountbellew Workhouse Cemetery Restoration Facebook page.

It will be a twofold project, one tracing the Orphan Girls descendants in Australia and second fold looking at possible descendants of relatives here in the surrounding localities of Mountbellew, Caltra, Castleblakeney, Moylough, Newbridge, to name a few.

This article was published in the *Connacht Tribune* on July 22, 2016 and publicised on the *Ireland Reaching out – The Earl Grey Female Orphans* Facebook page.

(MOUNTBELLEW is in the Archdiocese of Tuam, Galway. Variant forms of parish name: Moylough and Mountbellow).

Maggie Heffernan Member # 1622

MOONRAKERS WILTSHIRE GENEALOGY

<http://www.moonrakers.org.uk/>

The Moonraker's website is dedicated to the history and genealogy of the ancient county of Wiltshire, England and bringing these peoples together in a common quest for their heritage and ancestors. Member, Roy Longman has sent us some information which has come up in discussions relating to Moonrakers Occupations.

In a list of bank shareholders (The London & County Banking Company) published in a supplement to the London Gazette on 27th Feb 1878 the occupation of each shareholder is shown. Women seem to be either widows or spinsters, whilst the men include all the obvious butchers, bakers, farmers, etc. There are also quite a few with occupation shown as Gentleman and others as Esquire. What is the difference? Is it that Gentlemen are of independent means whereas an Esquire had an 'important' job? Another occupation that is shown is that of screebler or scribbler. It seems that it is a person working in a woollen mill, but what do they do?

Maybe some hints can be found in a list of **Obscure Old English Census Occupations** found on <http://www.worldthroughthelens.com/family-history/old-occupations.php>

STRAY CERTIFICATES & TRANSCRIPTIONS, ETC.

The Society has recently been given some unwanted Certificates, etc. and these have been added to the file called "**BDM Strays**" in VF1 (filing cabinet) in our room.

Details are shown below and if you think it is possible that any of these people could belong to your family, please check the file. If you are lucky and they are part of your family, please feel free to take the copy for your research records and then mark that you have taken it from the printout of this list in the folder with the copies.

Marriage Transcription: Edward John CARTER and Ada Adeline WOODS, m.27 Apr 1929, Newtown NSW
Baptism Certificate: George LEWIS, bap.21 Apr 1850 (born 6 Oct 1845), Sydney NSW
Death Certificate: Margaret McINTOSH, d.9 Apr 1875, Lambton NSW
Will: Lachlan McINTYRE, 23 Oct 1885, Glenhoe NSW

MONITORS

If you are a member and would like to become a monitor, you will find not only do you meet and assist some great people but also, the experience is enjoyable and very interesting. Please contact Monitor Co-ordinator Christine Berridge for more information: phone 6652 6626 or email c_spider@bigpond.com - or leave a message in her drawer near the admin. desk.

GENEALOGY EVENTS – WHAT'S ON

9-11 September 2016: "Cowpastures and Beyond" NSW & ACT Association of Family History Societies Inc. 2015 Conference hosted by Camden Area Family History Society Inc. and Picton District Historical and Family History Society Inc. - Camden Civic Centre.

There is more information on the Conference website at <http://www.cowpasturesandbeyond.com.au/> or email nswact2016conference@gmail.com or go to the Facebook page at <https://www.facebook.com/Cowpastures-and-beyond-1687858388097153/>

Our Workshops and Seminars are listed under the Workshops Heading in this journal as well as on our Website. For a listing of more events, go to <http://www.unlockthepast.com.au/events>

If there are any other events you would like included in the next Journal please give the details to Narelle Hoy, our Journal Editor.

WELCOME TO OUR NEW MEMBERS



We welcome the following new members to our Society since our last issue of Genie Allergy and wish you well with your research.

Kerry Smith #1862	Gloria Ball #1863	Pam Stewart #1864
Neville Stewart #1865	Sharon Williams #1867	Lorraine Jones #1868

MEMBERSHIP RENEWALS, CONTACT DETAILS, ETC

If a Membership Application/Renewal Form is included with this Journal, your membership is due for renewal before 1st December 2016. Cash and cheque payments may be made at the Society's rooms; cheque payments mailed to PO Box 2057, Coffs Harbour, 2450; or electronic funds transfer (EFT) to our bank account will be accepted (see procedure on form).

It is most IMPORTANT that a form is completed for all membership renewals when you are paying your renewal. You can also use the form for changes to your contact details.

Remember: If you choose to pay by **direct deposit** into the Society's bank account, **IT IS ESSENTIAL** that you email a copy to us so that both the Treasurer and Membership Secretary are aware of the deposit.

When you have renewed your membership, your new card will be placed in the Card Box on the Admin Desk in our Research Room for your collection, unless you attach a stamped addressed envelope when it will be mailed to you.

Marlene Gordon – Membership Secretary #1307

ORDERING FamilySearch FILM / FICHE

Please contact me if you need help in locating and ordering microfilms/fiche. The order book is under the desk where the book scanner is located.

- To find the details of film you would like to order go to www.familysearch.org
- On the menu bar go to Catalogue, click on Place Search, enter the town you are looking for and choose your country. This will then open to what records you are searching for. Alternatively you can browse by location, choose your country, this will then open to the records listed available for that country.
- Orders to be entered into the RED FOLDER beside the FamilySearch cabinet with name and telephone number. The cost is \$9 per film/fiche and a receipt will be issued.
- PLEASE allow 4-6 weeks for delivery. You will be notified when your film arrives.
- Please supply film/fiche numbers (if applicable), place and whether they are Parish Records, Census, and Bishops Transcripts etc.
- Films may be viewed anytime during normal opening hours however please phone the rooms and book a time if you would like to use the View Scan.

FamilySearch: A GUIDE to the BRITISH BATCHES created by Archer Software

This website lists the extracted batches for the British Isles - previously formed part of the IGI. The introduction is self-explanatory and easy to use.

This site is worth a look and although it doesn't offer all the information provided by the IGI Batch Numbers Website created by Hugh Wallis, it updates and amplifies much of that information.

Look at: www.archersoftware.com.uk/igi/

Helen Hull #1324 FamilySearch Administrator 6652 3339

WORKSHOPS AND SEMINARS

Date, Time and Venue	Topic and Presenter
24/9/2016 1.30pm Uniting Church Hall, Vernon St.	AGM followed by Workshop: “Show and Tell Us About Your Family Memorabilia” – bring something that has special significance in your family and talk about it.
29/10/2016 9.30am-3.30pm Cavanbah Centre, 191 Harbour Dr. (NB: 5th Saturday)	COFFS HARBOUR DISTRICT REGIONAL SEMINAR: The Royal Australian Historical Society in conjunction with our Society is presenting this Seminar. Topics: “Accessing Land Records”; “German Immigration”; and “Furnishing Your Ancestor’s House”. Speakers will be Associate Professor Carol Liston, Dr Kathrine Reynolds and Christine Yeats from the RAHS. See below for more information.
26/11/2016 1.30pm Uniting Church Hall, Vernon St.	The “Women’s Agricultural Security Production Service” (WASPS) from WWII. Bill Oates, University Archivist at University of New England, Armidale will be Guest Speaker.
10/12/2016 12 noon Sawtell Golf Club	Christmas Party: Two course Christmas Lunch. Husbands, wives and partners welcome. Cost \$30 per person. Bookings and payment essential by 1 st December.

Details and venues subject to change if necessary – please contact the Society for confirmation.

Sharon Ingersole #1548 Workshop Co-Ordinator

COFFS HARBOUR DISTRICT REGIONAL SEMINAR

The program for this Seminar is included with this journal which gives all the relevant information. The RAHS 2016-2018 regional seminar program is supported by grant funding from Arts NSW and the cost of this Seminar is \$20.

Bookings are essential and should be made directly with the RAHS. Bookings are now open and can be made by calling History House on 02 9247 8001 or emailing history@rahs.org.au

For online bookings and more information visit: <http://www.rahs.org.au/event/coffs-harbour-district-regional-seminar/>

IMPORTANT: If you are not comfortable with booking by phone or online directly with RAHS, registration and payment can be made through our Society BEFORE Wednesday 26th October but it will not be possible to register or pay on the day of the Seminar.

If you have any enquiries, please contact the Society on 02 6651 6126 or email coffsgenie@gmail.com

WISH YOU COULD STILL BUY THESE! – The Australian WOMEN’S MIRROR – August 9, 1938

The Pattern Dept has in stock lingerie patterns designed for the large woman: sizes 42, 44 and 46 in. bust. The following are available : No. 1563, Vest and Scanties or bloomers; 1564, Slip; 1565 Dressing-gown; 1566, Nightie. Price 1/- each, post free. Embroidery transfer, 3d.extra. Full set patterns, 3/6, including sufficient transfers to work all garments.

ITEMS of INTEREST from EXCHANGE JOURNALS

Our Society subscribes to some journals and exchanges journals/newsletters with a large number of other societies and groups (family history and historical societies, etc.). Members are able to borrow ‘exchange journals’ from our research room. If you see an article listed below that you would like to read, feel free to borrow it on your next visit to our room. Also check the districts these journals are from and if there is an area not covered, let me know and we will do our best to track it down for you.

Leonie Baker - Exchange Journals Officer #769

UK FAMILY TREE:

Feb 2016: Page 10 What’s Great About Ireland (Research); Page 20 Getting Down to the Nitty Gritty (Problem Solving for Family Historians Search Solutions Part 5 (decoding documents); Page 30 Free-search Your Family Tree; and Page 44 Crowdsourcing Your Brick Walls.

Mar 2016: Page 10 Keep it in the Family (how to keep your family interested in their own history); Page 26 Taking Stock of Your Irish Ancestry; and Page 36 Your Family History Software Options.

Apr 2016: Page 51 Emigrating Ancestors - The British Overseas; and Page 60 Deeper Research – The Birth of Civil Registration.

May 2016: Page 10 The Top Free Websites for Family History; Page 20 Biggest Search Mistakes (not to make!); and Page 74 How to Improve your Research Knowledge (understanding online collections).

WHO DO YOU THINK YOU ARE?

Feb 2016: Page 61 Focus on Freemasons Records; and Page 81 Around Britain – Aberdeenshire.

Mar 2016: Page 17 Search Like a Pro and Find Missing Births; Page 47 Best Websites - Parish Chest Records; Page 50 Focus on French Genealogy; and Page 75 Around Britain – Manchester.

Apr 2016: Page 49 Best Websites – Passenger Lists; Page 63 Focus on Tithe Records; and Page 83 Around Britain – Pembrokeshire.

May 2016: Page 81 Around Britain – West Midlands.

Jun 2016: Page 17 Ten Things You Didn’t Know about Parish Registers; Page 52 Focus on Overseas BMDs; and 81 Around Britain – North London.

INSIDE HISTORY:

Jan-Feb 2016 Page 28 The Jigsaw of Genealogy (good article on the Biographical Database of Australia.

May-Jun 2016 Page 20 Ask our Experts – Kerry Farmer helps decode DNA tests (could answer your queries on type of DNA test is best for you to have done).

AUSTRALIAN FAMILY TREE CONNECTIONS JUN 2016: Page 35 Researching Japanese Family History.

FAMILY HISTORY GROUPS:

The Crossing Place May 2016 No 113 (Casino and District Family History Group Inc.): Page 15 Recover Accidentally Deleted Files.

Kin Tracer Apr 2016 Year 23 Issue 3 (Genealogy Sunshine Coast): Page 13 British Citizens Overseas (some useful info about find BMD records for England that are elusive).

Newcastle Family History Society Inc. Journal Mar 2016 No 213: Page 6 Remembrance (Recruitment or Snowball Marches – WWI).

The Patrick Plains Gazette Apr 2016 Vol 33 No 1 (Family History Soc. Singleton Inc.): Page 5 We Remember Those Known to have Died in WWI in 1916; and various other articles related to WWI including Roll of Honour.

Footsteps May 2016 No 139 (Pt Macquarie & Dist. Family History Soc. Inc.): The theme for this journal was “Tracing the Lives of Your Convict Ancestors” and it includes several articles including one from Noeline Kyle on The Convict Child. Could be interesting reading following our July Workshop.

Cedar Branches Jan 2016 Vol 3 No 3 (Kempsey Family History Group Inc.): Page 3 North Coast Recruitment March.

Orange Family History Group Newsletter Apr 2016: Page 3 Researching Patient Records from Mental Health Facilities.

Links ‘N’ Chains (Liverpool Genealogy Soc. Inc.):

- **Feb 2016 No 112** Page 18 The Irish Catholic Parish Registers (some easy to follow tips for searching them).
- **Jun 2016 No 113** Page 21 Learning How to Use Legacy (family tree program).

Queensland Family Historian May 2016 Vol 37 No 2: Page 56 Finding Photos of World War I Soldiers.
Family Ties (Bundaberg Genealogical Assoc. Inc.):

- **Vol 19 No 3 March 2016** Page 13 Why Did Migrants Apply to Be Naturalised? (includes some useful information for searching).

- **Vol.19 No 4 Jun 2016** Page 18 Some Australian States and Their Records (NT, ACT, SA, Tas.)

The CQ Genie-ologist Mar 2016 Issue 119 (Central Qld Family History Assoc. Inc.): Page 29 Is that my Ancestor (cont. from their Sep 2015 Journal).

Forebears May 2016 Vol 37 No 1 (Maryborough District Family History Soc. Inc.): Page 6 Six Secret Google Search Tricks for Genealogy That'll Help You Find Your Ancestors.

Peninsula Past Times May 2016 No 142 (Mornington Peninsula Family History Soc. Inc.): Page 16 Migrant Settlement Act 1922 continued (surnames starting with B).

Ancestor Mar 2016 Vol 33 Issue 1 Genealogical Soc. of Victoria Inc.): Page 20 Exploring the new Births, Deaths, Marriages, Victoria Historical Indexes (hints on searching).

The Grapeline Mar 2016 Vol. 16 No. 1 (Mildura & District Genealogical Soc. Inc.): Page 4 Planning a Family Reunion.

The South Australian Genealogist May 2016 Vol 43 No 2 (SA Genealogy & Heraldry Soc. Inc.): Page 37 Scottish Marriage Index – good information and link to index for those with ancestors who emigrated.

Tasmanian Ancestry Jun 2016 Vol 37 No 1 (Tasmanian Family History Society Inc.): Page 36 The Settlement Patterns of Immigrants from Germany – A Case Study of the 'Procida' Immigrants of 1885 (includes details of Assisted Immigrants).

Dunedin NZ Family History Group Newsletter:

- **Mar 2016:** Page 3 Dipton War Memorial (details).
- **Apr 2016:** Page 5 The First Passengers to Arrive in Dunedin for the Year 1848
- **Jun 2016:** Page 2 Menzies Ferry War Memorial; Page 4 Update to Headstones Photographed Available on Dunedin City Council Website; and Page 5 MacAndrew Road School (incl. pupil details).

USEFUL WEBSITES, ETC. FOR GENEALOGY

***India Office Family History Search** website is taken from a card index compiled by members of staff at the India Office Records from the mid-1970s onwards to meet the growing interest in genealogy and previously only available at the British Library. You can use the website to search 300,000 births, baptisms, marriages, deaths and burials in the India Office Records; biographical notes from a variety of sources; it is mainly for British and European people in India c.1600-1949; and for people in other countries connected with the history of the British in India. Search at <https://indiafamily.bl.uk/ui/home.aspx>

***State Records NSW** has launched a new website which includes a new search engine for their collections. Researchers will now be able to do a single, simple search to discover photographic and documentary content from amongst the Collection. Note that the online indexes are still accessible via the new website but have not yet been migrated to the new system. This will be an ongoing process over time however they will ultimately all be accessible from the single search engine. For more information on using the new website go to <https://www.records.nsw.gov.au/archives/collections-and-research/guides-and-indexes/how-to-use-the-website>.

***Papers Past:** This website run by the National Library of New Zealand and as well as newspapers, now also has historic magazines and journals, letters and diaries and parliamentary papers (NZ's version of Trove). The website can be searched by keyword (like name), date range and title. <https://paperspast.natlib.govt.nz/> They are testing a new beta version of the website with the objective to improve the search tools and provide more kinds of content. For those who are not familiar with Papers Past, it is the definitive source for researching historic New Zealand newspapers. It has over four million pages of digitized content.

***North Coast Families Past & Present Facebook Group:** A place to share stories of growing up in your home town on the North Coast and to post photos of Ancestors, Great- Grandparents, Grandparents, Parents, Uncles, Aunts, Cousins, any and all Family members from Newcastle to Lismore and beyond to Tweed River Area; School photos, family photos your favourite photos of old buildings and floods; a place to connect with friends and family; sharing family research; a place to post Scratch and torn photos and unknown photos in the hope of finding out who is in the photos. <https://www.facebook.com/groups/661391397329985/>

***Free Scottish Records:** Indexes to thousands of historic Scottish records have been made available online at <http://www.scottishindexes.com/recordsets.aspx>

***FamilySearch** additions include: Burial records 1886-1948 for Waikumete Cemetery in **Auckland, New Zealand**.

***Ancestry** has again added many records including: **Tasmania** Deeds of Land Grants 1804-1935; **Northern Territory** Probate Index 1911-1994; **Western Australia** Railway Records 1879-1986; **Gloucestershire** Prison Records 1728-1914, Electoral Registers 1832-1974 and Land Tax Records 1713-1833; **Germany** Lutheran Baptism, Marriages, and Burials, 1564-1938; **Dresden, Germany** Weekly Church Reports of Births, Marriages, and Deaths, 1685-1879; **Sweden** Emigrants Registered in Church Books, 1783-1991.

***FindMyPast** has also added additional datasets including: **Westminster** Baptisms, Marriages and Burials; **Plymouth, Devon** Prison Records 1832-1919; **Warwickshire** Burials; **Birmingham, Warwickshire** St Martin in the Bull Ring Parish Registers 1554-1913 (Birmingham's original parish church); **United States** Naturalization Petitions; **United States** Passport Applications; **Scotland**, Aberdeenshire, Banffshire & Kincardineshire Monumental Inscriptions.

***The Genealogist** has added more records including **Norfolk** parish records.

REMEMBER: Keep checking sites you have searched before as most are constantly adding new records, especially Trove Newspapers, Findmypast, Ancestry, The Genealogist, etc.

CAN YOU HELP?

Our Society has received an enquiry from Di and Wayne Hoppe who are hoping to contact any descendants of Susan **BURTON** and thought it was possible some may still be in the Coffs Harbour area.

Susan was a partner to George Frederick **BURTON** and they lived at Coffs Harbour from about 1911 until her death in 1915 and then George moved to Sydney in 1918.

Susan was previously married to Francis **LOWE** and her children may have used either surname.

- Her children to George **BURTON** include: Jessie m. John C. **MACKAY**, Alice M. m1: Richard J. **TAYLOR** m2: Thomas **COLEMAN**, Alexander George m1: Edna N. **GORST**, m2: Gladys, Florence m Wilfred W. **BATEUP**, Alfred Arthur m. Vera J. **GORMAN**, Douglas David m. Lillian M. **BINGHAM**.
- Her children to Francis **LOWE** include: Evelyn Haidee m. John R. **BRAY**, Elsie Lorna m. James **LILLIAN**, Frances m. William **MASON**, Lillian Frances m. William **MASON**.

Di and Wayne would love to hear from anyone with information on these families so that it can be included in a book they are planning on having the final draft ready by November. Please contact them by email at tipandus@gmail.com

MEMBERS' INTERESTS

PAUL DAVIES Member #1819 Phone: 02 6568 8415

FAMILY NAME	CHRISTIAN NAME	TIME PERIOD	CITY/TOWN	STATE or COUNTY	COUNTRY
CRITCHLEY	William	1800	Pembroke	PEM	WLS
DAVIES	Alan Gordon	1800s	Pembroke	PEM	WLS

1038 EASTBANK ROAD, NANA GLEN

Pam Stewart, Member #1864 is wondering if any member may have information on the property at the above address at Nana Glen. It is likely that the address for the property had previously used an RMB number instead of No. 1038. A dentist has recently purchased the property. If you can help Pam with any information, please contact her on 02 6568 9033.

DAVID FAYLE Member #1796 Email: david.fayle@bioaccent.com.au Phone: 0401 022 951

FAMILY NAME	CHRISTIAN NAME	TIME PERIOD	CITY/TOWN	STATE or COUNTY	COUNTRY
PALLIER		1681-1839	London	LDN	ENG
JOHNSON	James (alias John Joseph Pallier)	1830		NSW	AUS
PALLIER		1830 ON		NSW	AUS
BOYLE	Mary Ann	1803-1815		NSW	AUS
ROCK		1798 ON		NSW, VIC?	AUS
ROCK		<1798		DBY	ENG
WILLOCKS		1750-1900		MDX, LDN	ENG
ROGERS	Mary Ann	1803-1819		NSW	AUS
ELTIS	Isabella	1801-1860		NSW	AUS
HELTIS	Isabella	1801-1861		NSW	AUS
ELTIS		1700-1802		NBL	ENG
HELTIS		1700-1802		NBL	ENG
HIGGINSON		1650-1800			IRL
WATERWORTH		1820 ON		NSW	AUS
FORBES	Alexander	1845 ON		NSW	AUS
GORDON		1857 ON		NSW	AUS
GIBSON	William Henry	1852-1857		TAS, NSW	AUS
FERNANDEZ	Sydney John	1864	Dunedin	OTG	NZ
FERNANDEZ		1870 ON		QLD, NSW	AUS
WHITTLE		1861 ON		VIC, NSW	AUS

NEW RESOURCES

BOOKS

- FINDING FLORENCE, MAUD, MATILDA ROSE Donated Cheryl Lynch
- ROUSE HILL HOUSE & THE ROUSES
- SINGLE & FREE: FEMALE MIGRATION TO AUSTRALIA 1833-1837 Donated Sharon Ingersole
- A HISTORY OF GLENREAGH PUBLIC SCHOOL CENTENARY 1887-1987 Donated June Dziedziczak
- A HISTORY OF NANA GLEN PRIMARY SCHOOL 1892-1992
- CENTENARY OF THE GRIFFITH DISTRICT 1916-2016
- MIDWIVES: COFFS HARBOUR DISTRICT, BELLINGEN , DORRIGO & NAMBUCCA VALLEY
- GONE BUSH IN NSW Donated June Dziedziczak
- GASLIGHT SYDNEY: THE CITY VIEWED THROUGH LATE VICTORIAN EYES Donated Bev Salter
- ASHFIELD AT FEDERATION Donated Bev Salter
- THE WOMEN OF THE 1790 *NEPTUNE* Donated Bev Salter
-

CDS

- THE CONVICT SHIPS 1788-1868
- DOCTORS, RATCHATCHERS & QUARANTINE IN-BETWEEN INDEX TO THE BOARD OF HEALTH
- SURGEONS AT SEA: AN INDEX TO THE FILMED SURGEONS' JOURNALS ON THE CONVICT SHIPS TO AUSTRALIA WITH SOME STRAYS.

Choosing new resources for our Society is often a difficult job for the Committee and we welcome input from our members. We try to choose resources that will be well used by many and cover a broad field. If you would like to offer suggestions please fill out the form which is in the Brown Folder on the Admin Desk in our rooms and place in the Resources Tray near the Admin Computer.

Gloria Small – Resources Officer #435

MEMBER ENTITLEMENTS

- Use of Society's resources including books, microfilms, microfiche, computer system etc
- Receive quarterly Journal Genie-Allergy
- Attend meetings and monthly workshops
- Guidance with research in our library
- Resource borrowing scheme
- Free entries in Member's Interests Directory
- 2 hours free research per year for members who are resident 50km or more from Coffs Harbour.

JOURNAL DEADLINES

# 1 st February	1 st Quarter	March Issue
# 1 st May	2 nd Quarter	June Issue
# 1 st August	3 rd Quarter	September Issue
# 1 st November	4 th Quarter	December Issue

Members are invited to submit stories of interest, enquiries re their research, or questions about research for inclusion in our Journal. Material needs to be received by the deadline as above to be included in the next available issue.

ITEMS FOR SALE

Pedigree Charts	20c ea.
Family Group Sheets	20c ea.
Pedigree Chart	20c ea.
Printouts from Computer	20c ea.
Photocopies A4	20c ea.
Brothers Keeper Family Tree CD	\$3.00 ea.
Legacy Family Tree Standard CD	\$3.00 ea.
Researcher's Notebook	\$2.00 ea.
Convict Research Booklet	\$2.00 ea.
Beginning Your Family History Booklet	\$2.00 ea.
Replacement Card Holders	50c ea
Seven Generation Charts A3	\$5.00 ea.

MIDWIVES: Coffs Harbour District, Bellingen & Dorrigo, Nambucca Valley

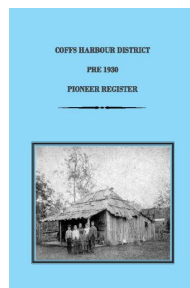
MIDWIVES



COFFS HARBOUR DISTRICT
BELLINGEN AND DORRIGO
NAMBUECA VALLEY

\$20.00 each
Plus \$7.50 P&H

COFFS HARBOUR DISTRICT PRE 1930 PIONEER REGISTER



\$20.00 each
Plus \$15.00 P&H

DAD'S DIARIES

The diaries of Roy Jordan, son of Walter George Jordan, a pioneer of the Coffs district.
\$18.00

COFFS HARBOUR AND DISTRICT WORLD WAR I VOLUNTEERS' LETTERS HOME (as published in 'Coffs Harbour and Dorrigo Advocate')

COFFS HARBOUR AND DISTRICT WORLD WAR I HONOUR BOARDS

\$6.00 each

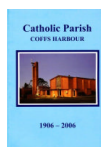
Writing Family History Templates and Guide Dr Noeline Kyle 2009



PRICE: \$10.00
(includes Book & CD)

CATHOLIC PARISH, COFFS HARBOUR 1906-2006

ST AUGUSTINE'S SCHOOL COFFS HARBOUR 1913-2013

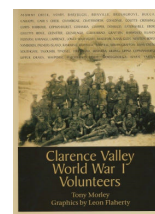


\$10 each



If you would like to purchase any of these items, please ask the Duty Monitor when in our Research Room or phone or email the Society

CLARENCE VALLEY WORLD WAR I VOLUNTEERS By Tony Morley



\$30 .00 each plus P&H

A most informative record of those who served in WWI from the Clarence Valley area which encompasses quite a large part of NSW (includes Coffs Harbour, Woolgoolga, Dorrigo, Ebor, Gleniffer, etc).

It gives details of where units were sent, lists Gallipoli casualties, deaths and awards, chronological battle information and an alphabetical list of volunteers with a brief description of each.

CORA NUM BOOKS

How Did They Get Here? Arrivals after 1924 **\$10.00**

Internet Family History **\$12.00**

Shipping and Migration Research on the Internet **\$12.00**

DVDs PRODUCED BY GRAHAM BELL \$20 EACH

The Coffs Harbour Story Part 1

The Way It Was

Coffs Harbour 150 Years Old

– Looking Back in 2011

Jack Gerard the Showman

100 Years on the Eastern Dorrigo

Jack Hurley and The Lions Road

OTHER TITLES AVAILABLE BY SPECIAL ORDER

